



BETTER CHOICES FOR PEOPLE AND THE PLANET



January 2023

PLT CANADA LAUNCHES NEW FOREST MANAGEMENT GAME

Project Learning Tree Canada launches a new educational and career resource, **Forest Quest!**

Whether you are an educator, high school or university faculty, career/guidance counselor, or a mentor, this valuable tool can help students understand why forests matter, the benefits of sustainable forest management, and the impact forests have on people and the planet. It's also a great way to expose young adults to various green jobs and inspire them to take action on behalf of forests. [Learn more about Forest Quest.](#)



GREEN WORKFORCE PANEL FOR YOUNG PROFESSIONALS

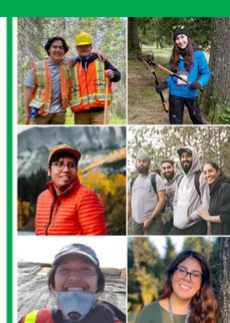
Share **Project Learning Tree Canada's** upcoming Green Workforce Panel with young professionals in your network. This interactive online panel will feature career pathways stories from those in the private, government, and non-profit sectors.

Young professionals will rotate between breakout groups to hear how each panelist got into their field, what a typical day looks like, and their tips on standing out during the first few months on the job. [Learn more.](#)

PLT CANADA GREEN WORKFORCE PANEL

FEBRUARY 22, 2023

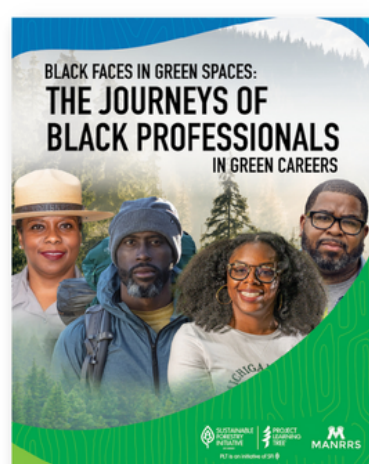
12:00 p.m. – 1:15 p.m. PT / 3:00 p.m. – 4:15 p.m. ET



THE JOURNEYS OF BLACK PROFESSIONALS IN GREEN CAREERS GUIDE

SFI and **Project Learning Tree (PLT)**, in partnership with the **Minorities in Agriculture, Natural Resources, and Related Sciences (MANRRS)**, are releasing a first-of-its-kind resource, the SFI-PLT-MANRRS **Black Faces in Green Spaces: Journeys of Black Professionals in Green Careers guide**, the result of a new partnership aimed at ensuring young Black Americans have greater opportunities for rewarding careers in the forest and conservation sector!

Inspire young Black Americans to pursue forest and conservation careers by sharing the stories and advice of those who have taken similar career paths, and learn more about the history of Black Americans in green jobs. [Pre-order a box](#) or [individual guides.](#)



SFI COMMUNITY GRANTS RFP NOW OPEN

SFI is interested in collaborating with local partners on community-based projects and activities that support SFI's mission to advance sustainability through forest-focused collaborations.

SFI opened its annual request for proposals (RFP) supporting **community**-focused grant projects. Applications will be accepted from eligible entities until 11:59 pm eastern time on March 17, 2023. [Learn more.](#)

All projects must be submitted by an SFI Implementation Committee (SIC) or non-profit organization.



SFI COMMUNITY GRANTS
REQUEST FOR PROPOSALS OPEN
MONDAY, JANUARY 9, 2023
THROUGH
FRIDAY, MARCH 17, 2023

COP15 30x30 COMMITMENT: AN IMPORTANT STEP TOWARD CONSERVATION AND SUSTAINABILITY

A commitment to 30x30, an initiative calling on the world's governments to designate 30 percent of Earth's land and ocean as protected areas by 2030, was among four goals and 23 targets for achievement of the 15th Conference of Parties to the UN Convention on Biological Diversity (COP15), which concluded in December. Representatives from nearly 200 nations attended the event, held in Montreal, Canada. [Learn more](#) about SFI's participation at COP15.



SFI at COP15 (left to right): SFI Board of Directors member Lennard Joe, CEO of the BC First Nations Forestry Council; Kathy Abusow, SFI President and CEO; SFI Board of Directors member Dr. Tracy Farrell, Director of International Union for Conservation of Nature North America and CEO of IUCN-US; and SFI Board of Directors member Catherine Grenier, President and CEO of Nature Conservancy of Canada.

JOIN SFI AND PEFC TO COLLABORATE FOR FORESTS, PEOPLE, AND NATURE

The Sustainable Forestry Initiative (SFI) is teaming up with PEFC International to bring you the **2023 SFI Annual Conference in collaboration with PEFC Week** in beautiful Vancouver, British Columbia, Canada, from **May 14-18, 2023.**

We invite you to learn about and discuss opportunities on the most-pressing issues and challenges facing people and the planet, both locally and globally. [Register now!](#) Sponsorship opportunities are also [available.](#)



CELEBRATE A LIFETIME OF LEARNING

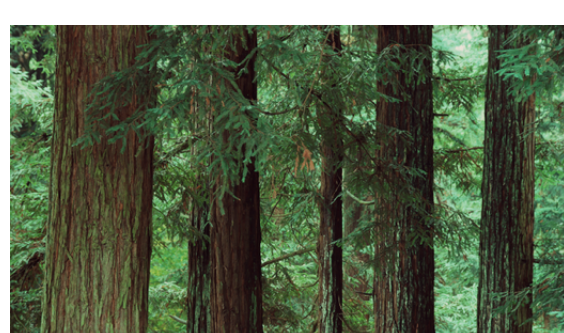
Project Learning Tree (PLT) recently launched a one-minute-long video that serves as a calling card for PLT programming and beautifully illustrates PLT's "Lifetime of Learning" philosophy, from environmental education to helping young adults explore career pathways in the forest and conservation sector. [Watch the video.](#)



THRU THE TREES VIDEO CONTEST

Thru The Trees is hosting a video contest for high school students ages 14-18 in Washington, Oregon, Idaho, and Montana to teach youth about forest-related careers.

[Share the opportunity](#) with educators in your network to help shape the next generation of forest and conservation leaders.



JOIN THE SFI TEAM!

Do you know someone passionate about the power of forest-focused collaboration? The Sustainable Forestry Initiative is seeking applicants for [positions.](#)

